

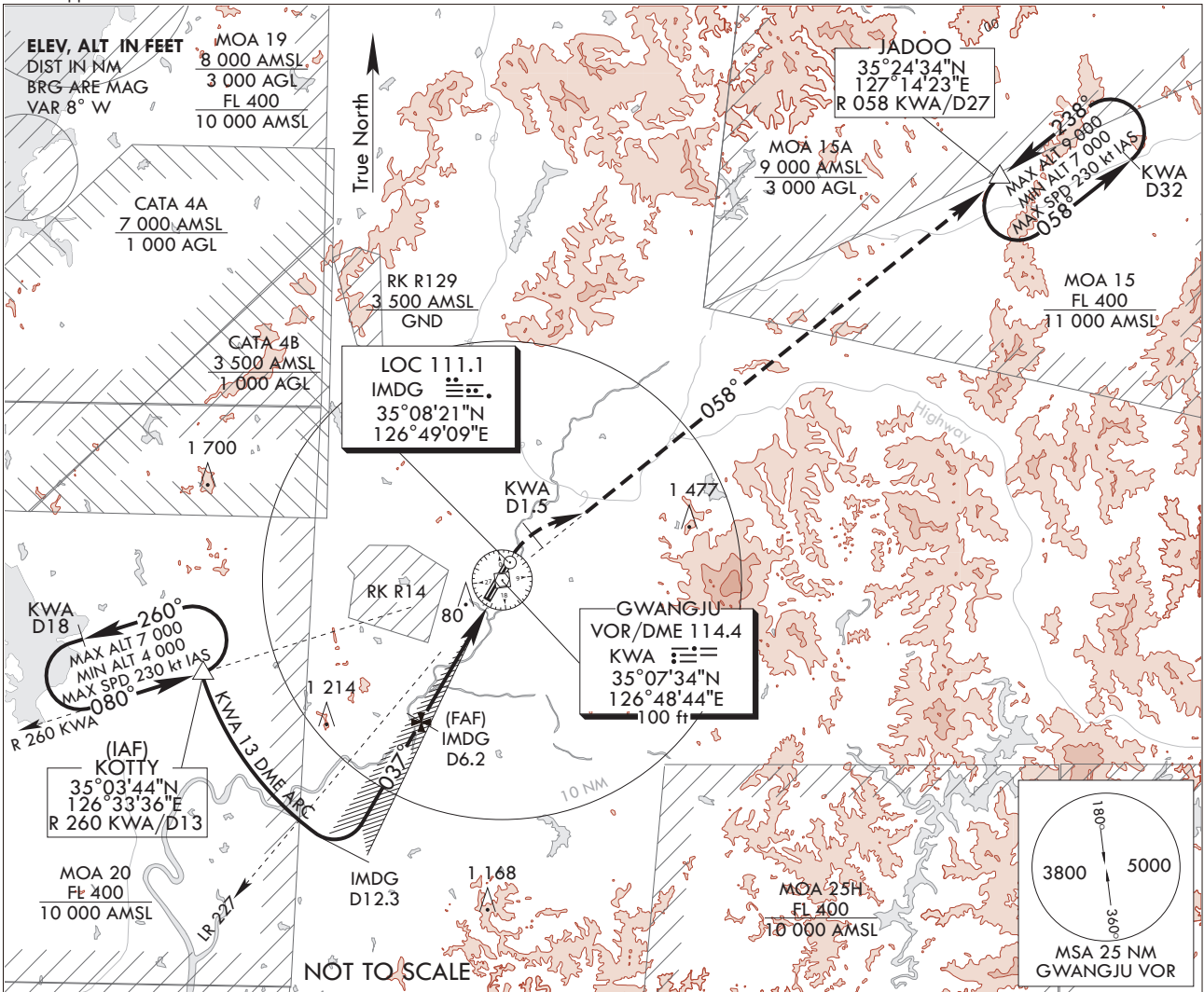
**INSTRUMENT
APPROACH
CHART**

AERODROME ELEV 48 ft
HEIGHTS RELATE TO
THR RWY 04R - ELEV 43 ft
HIGHEST ELEV TDZ 45 ft

GWANGJU APP	130.0
	228.9
GWANGJU TWR	118.05
	254.6

GWANGJU/Gwangju(RKJJ)
ILS/DME
RWY 04R

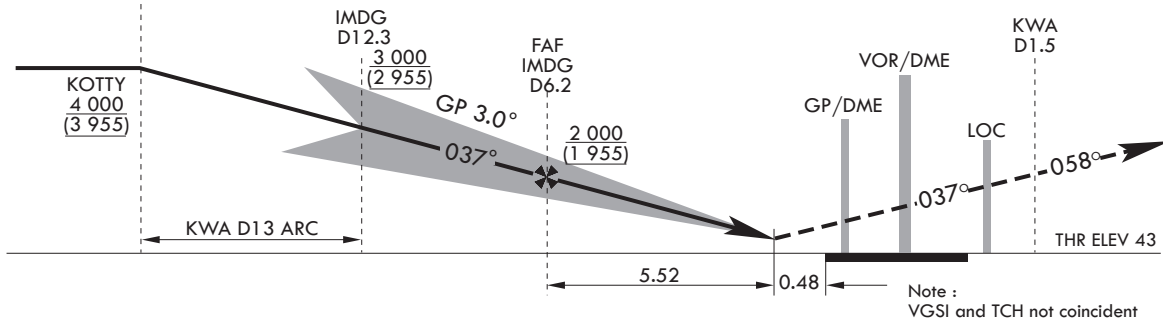
Note : Approach and circle to land under U.S. TERPS.



TRANSITION ALT 14 000
TRANSITION LVL FL 140

MISSED APPROACH

Climb HDG 037° to KWA 1.5D,
then climbing right turn intercept R 058 KWA
and track outbound R 058 KWA
and hold at JADOO(R 058 KWA/D27) maintain 7 000



Note :
VGSI and TCH not coincident

CATEGORY	A	B	C	D
S-ILS	245/730 m 200 (200-800 m)			
S-ILS (ALS inop)	245/1 220 m 200 (200-1 200 m)			

Change : Amended coordinate and radial format.

INTENTIONALLY

LEFT

BLANK

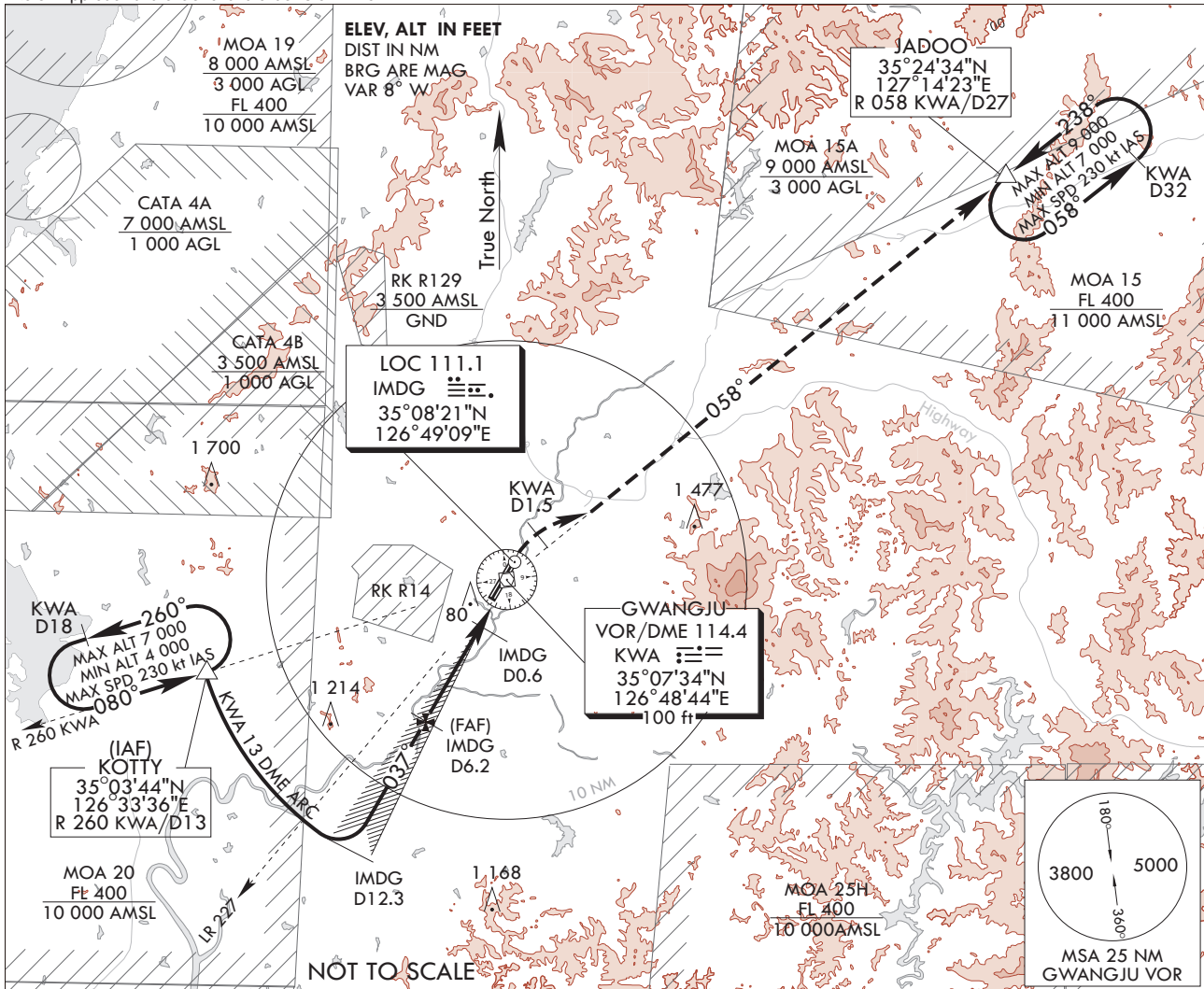
**INSTRUMENT
APPROACH
CHART**

AERODROME ELEV 48 ft
HEIGHTS RELATE TO
THR RWY 04R - ELEV 43 ft
HIGHEST ELEV TDZ 45 ft

GWANGJU APP 130.0
228.9
GWANGJU TWR 118.05
254.6

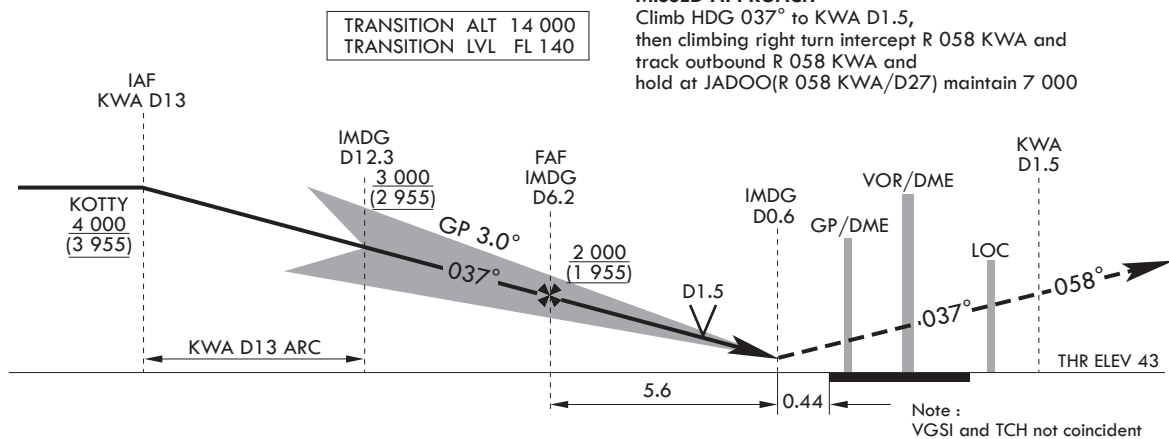
GWANGJU/Gwangju(RKJJ)
LOC/DME
RWY 04R

Note : Approach and circle to land under U.S. TERPS.



MISSED APPROACH

Climb HDG 037° to KWA D1.5, then climbing right turn intercept R 058 KWA and track outbound R 058 KWA and hold at JADOO(R 058 KWA/D27) maintain 7 000



CATEGORY	A	B	C	D
S-LOC/DME	520/1 220 m 475(500-1 200 m)			520/1 520 m 475(500-1 600 m)
S-LOC/DME (ALS INOP)	520/1 520 m 475(500-1 600 m)		520/1 830 m 475(500-2 000 m)	520-2 400 m 475(500-2 400m)
*CIRCLING	780-1 600 m 732(800-1 600 m)	900-2 000 m 852(900-2 000 m)	940-4 400 m 892(900-4 400 m)	1080-4800m 1 032(1 100-4 800m)

Change : Amended phrases.

INTENTIONALLY

LEFT

BLANK

INTENTIONALLY

LEFT

BLANK

**INSTRUMENT
APPROACH
CHART**

AERODROME ELEV 48 ft
HEIGHTS RELATE TO
THR RWY 04L - ELEV 44 ft
HIGHEST ELEV TDZ 45 ft

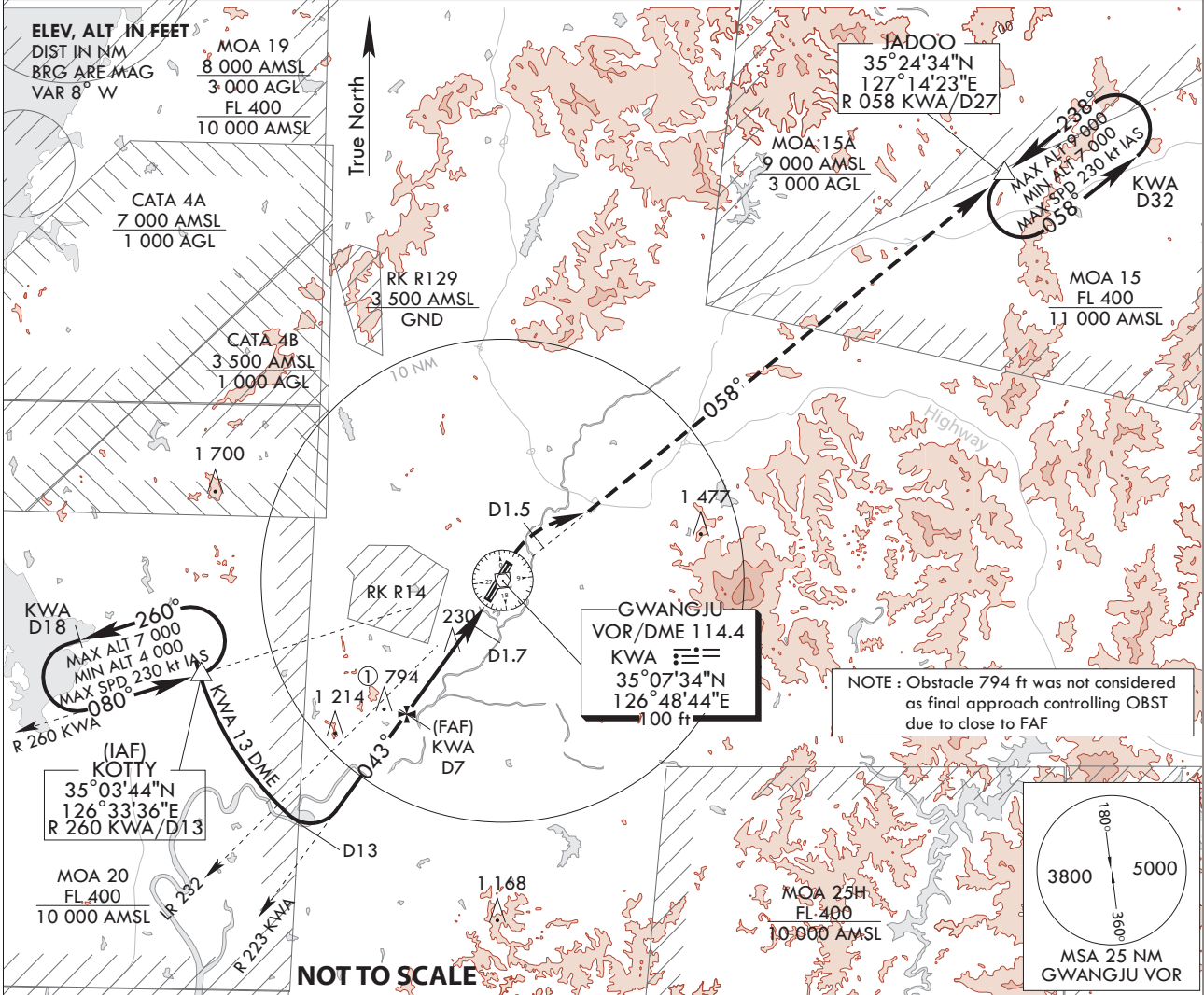
GWANGJU APP 130.0
228.9
GWANGJU TWR 118.05
254.6

GWANGJU/Gwangju(RKJJ)

VOR/DME

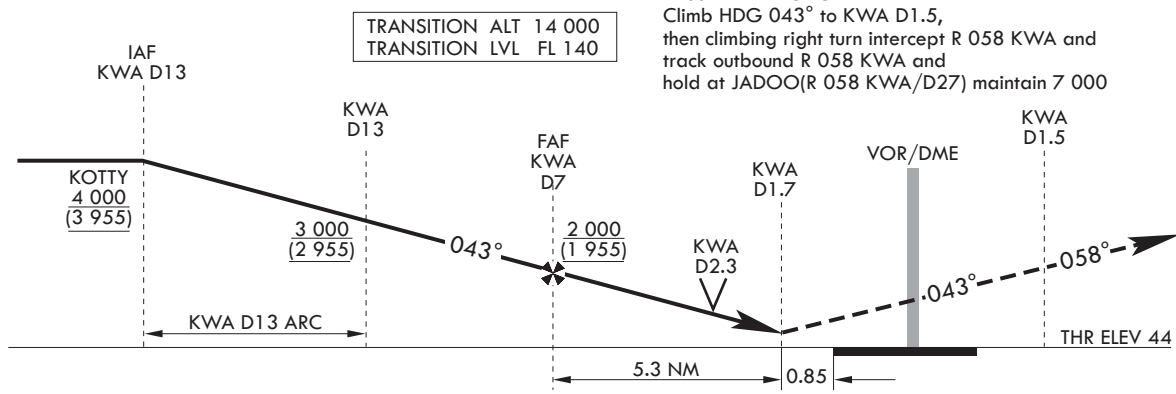
RWY 04L

Note : Approach and circle to land under U.S. TERPS.



MISSED APPROACH

Climb HDG 043° to KWA D1.5, then climbing right turn intercept R 058 KWA and track outbound R 058 KWA and hold at JADOO(R 058 KWA/D27) maintain 7 000



CATEGORY	A	B	C	D
S-VOR 04L	560/1 220 m 515(600-1 200 m)		560/1 520 m 515(600-1 600 m)	560/1 830 m 515(600-2 000 m)
S-VOR 04L (ALS INOP)	560-1 600 m 515(600-1 600 m)		560-2 400 m 515(600-2 400 m)	560-2 800 m 515(600-2 800 m)
*CIRCLING	780-1 600 m 732(800-1 600 m)	900-2 000 m 852(900-2 000 m)	940-4 400 m 892(900-4 400 m)	1 080-4 800 m 1 032(1 100-4 800 m)

Change : Amended coordinate and radial format.

INTENTIONALLY

LEFT

BLANK

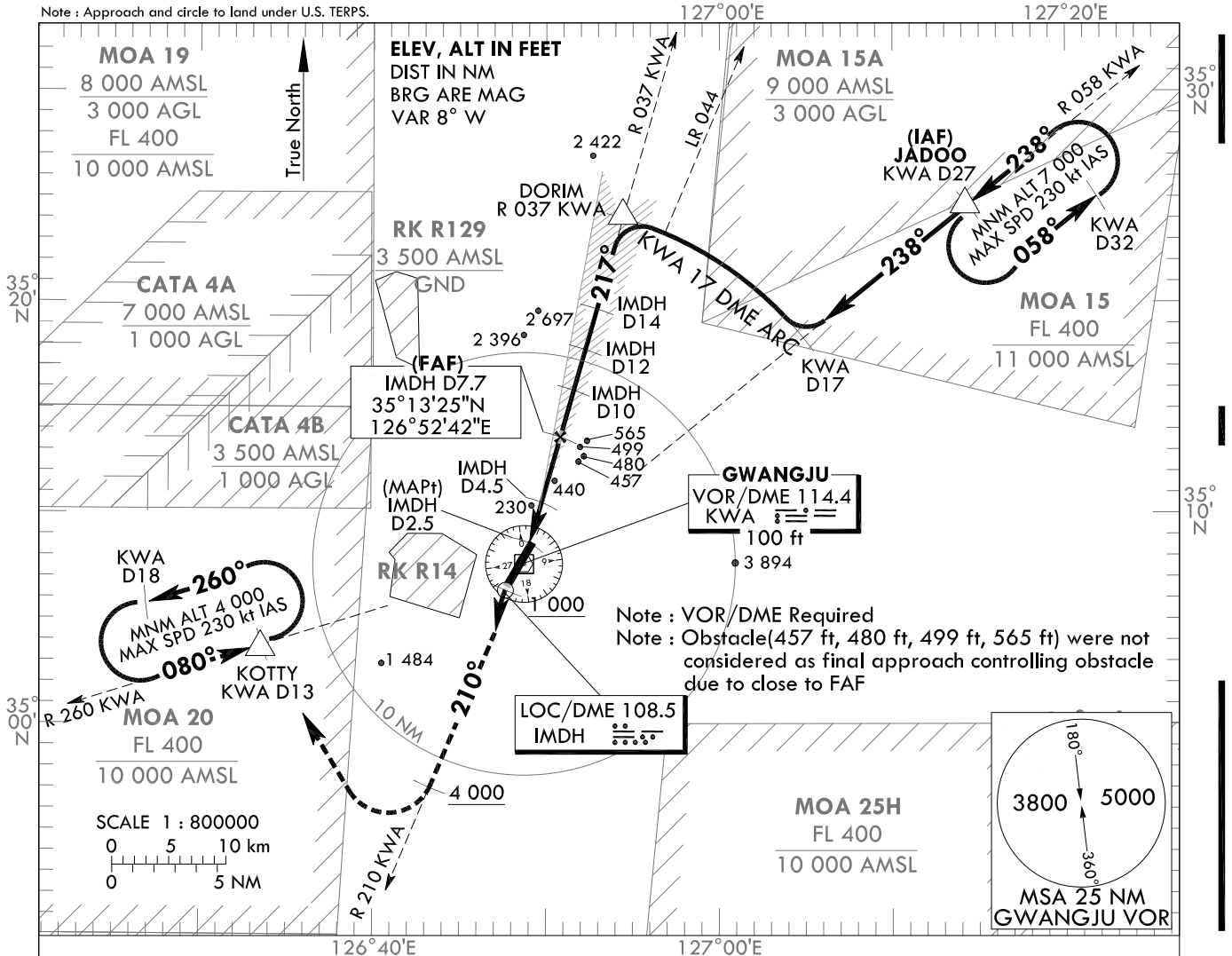
**INSTRUMENT
APPROACH
CHART**

AERODROME ELEV 48 ft
HEIGHTS RELATED TO
THR RWY 22L - ELEV 46 ft
HIGHEST ELEV TDZ 48 ft

GWANGJU APP 130.0
228.9
GWANGJU TWR 118.05
254.6

GWANGJU/Gwangju(RKJJ)
LOC/DME
RWY 22L

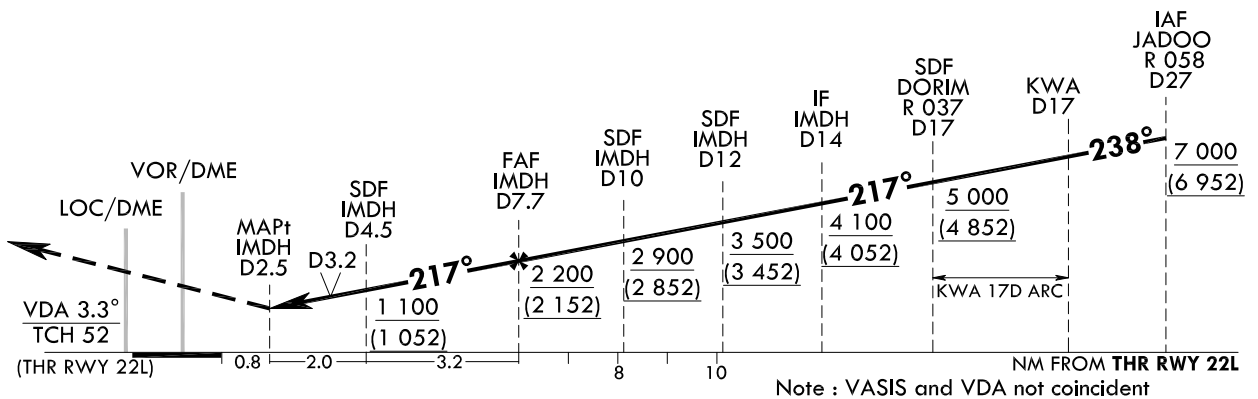
Note : Approach and circle to land under U.S. TERPS.



MISSED APPROACH

Climb HDG 217° to 1 000, then left turn HDG 210° to 4 000, then right turn direct KOTTY maintain 4 000 and hold.

TRANSITION ALT 14 000
TRANSITION LVL FL 140



CATEGORY	A	B	C	D
S-LOC 22L	560/1 220 m 512(600-1 200 m)		560/1 830 m 512(600-2 000 m)	560-2 400 m 512(600-2 400 m)
S-LOC 22L (ALS INOP)	560/1 830 m 512(600-1 600 m)		560-2 400 m 512(600-2 400 m)	560-2 800 m 512(600-2 800 m)
CIRCLING	780-1 600 m 732(800-1 600 m)	900-2 000 m 852(900-2 000 m)	940-4 400 m 892(900-4 400 m)	1080-4 800 m 1032(1100-4 800 m)

Note : Circling not authorized for west of RWY 22-04

Change : Amended radial format.

GWANGJU/Gwangju(RKJJ)
LOC/DME
RWY 22L

AERONAUTICAL DATA TABULATION

Fix/Point		Coordinates	
JADOO (IAF)	R 058.00°/27.00 NM KWA	35°24'37.6"N	127°14'18.8"E
17D KWA	R 058.00°/17.00 NM KWA	35°18'19.3"N	127°04'49.2"E
DORIM (SDF)	R 036.85°/17.00 NM KWA	35°22'21.8"N	126°59'00.3"E
14D IMDH (IF)	BRG217.16°/14.00 NM IMDH	35°18'53.1"N	126°56'33.2"E
12D IMDH (SDF)	BRG217.16°/12.00 NM IMDH	35°17'09.1"N	126°55'19.9"E
10D IMDH (SDF)	BRG217.16°/10.00 NM IMDH	35°15'25.0"N	126°54'06.7"E
7.7D IMDH (FAF)	BRG217.16°/7.70 NM IMDH	35°13'25"N	126°52'42"E
4.5D IMDH (SDF)	BRG217.16°/4.50 NM IMDH	35°10'38.6"N	126°50'45.6"E
2.5D IMDH (MAPt)	BRG217.16°/2.50 NM IMDH	35°08'54.5"N	126°49'32.5"E
THR RWY 22L	Final approach descent angle 3.30°	35°08'12.82"N	126°49'03.32"E
KWA VOR/DME		35°07'34.2"N	126°48'44.0"E
IMDH LOC/DME		35°06'44.3"N	126°48'01.3"E
KOTTY	R 260.00°/13.00 NM KWA	35°03'41.8"N	126°33'36.6"E

Change : Amended radial format.

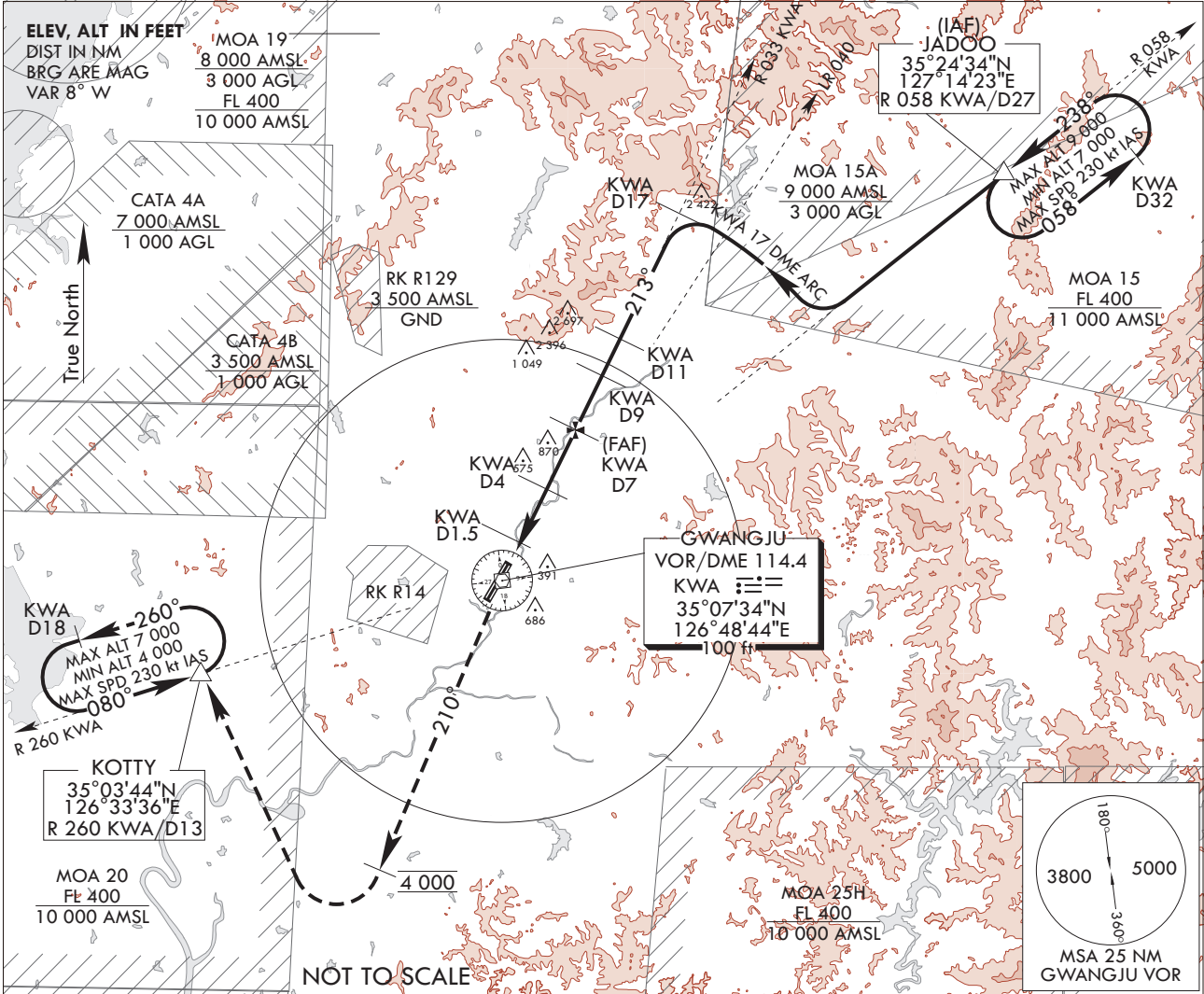
**INSTRUMENT
APPROACH
CHART**

AERODROME ELEV 48 ft
HEIGHTS RELATE TO
THR RWY 22L - ELEV 46 ft
HIGHEST ELEV TDZ 48 ft

GWANGJU APP	130.0
	228.9
GWANGJU TWR	118.05
	254.6

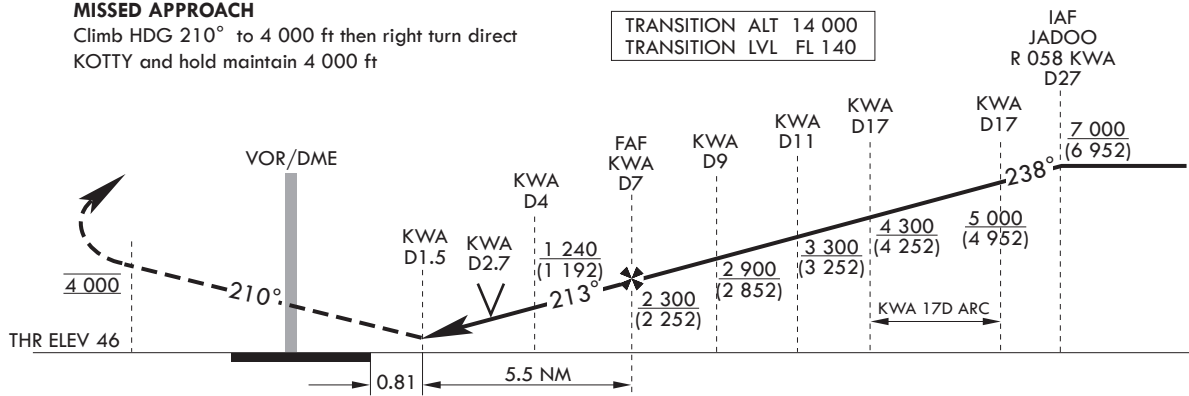
GWANGJU/Gwangju(RKJJ)
VOR/DME
RWY 22L

Note : Approach and circle to land under U.S. TERPS.



MISSED APPROACH

Climb HDG 210° to 4 000 ft then right turn direct KOTTY and hold maintain 4 000 ft



CATEGORY	A	B	C	D
S-VOR/DME 22L	740/1 220 m 692(700-1200 m)		740-2 800 m 692(700-2 800 m)	740-3 200 m 692(700-3 200 m)
S-VOR/DME 22L (ALS ionp)	740/1 520 m 692(700-1 600 m)		740-3 200 m 692(700-3 200 m)	740-3 600 m 692(700-3 600 m)
*CIRCLING	780-1 600 m 732(800-1 600 m)	900-2 000 m 852(900-2 000 m)	940-4 400 m 892(900-4 400 m)	1 080-4 800 m 1 032(1 100-4 800 m)

Change : Establishment of obstacle symbol and delete the phrases.

INTENTIONALLY

LEFT

BLANK

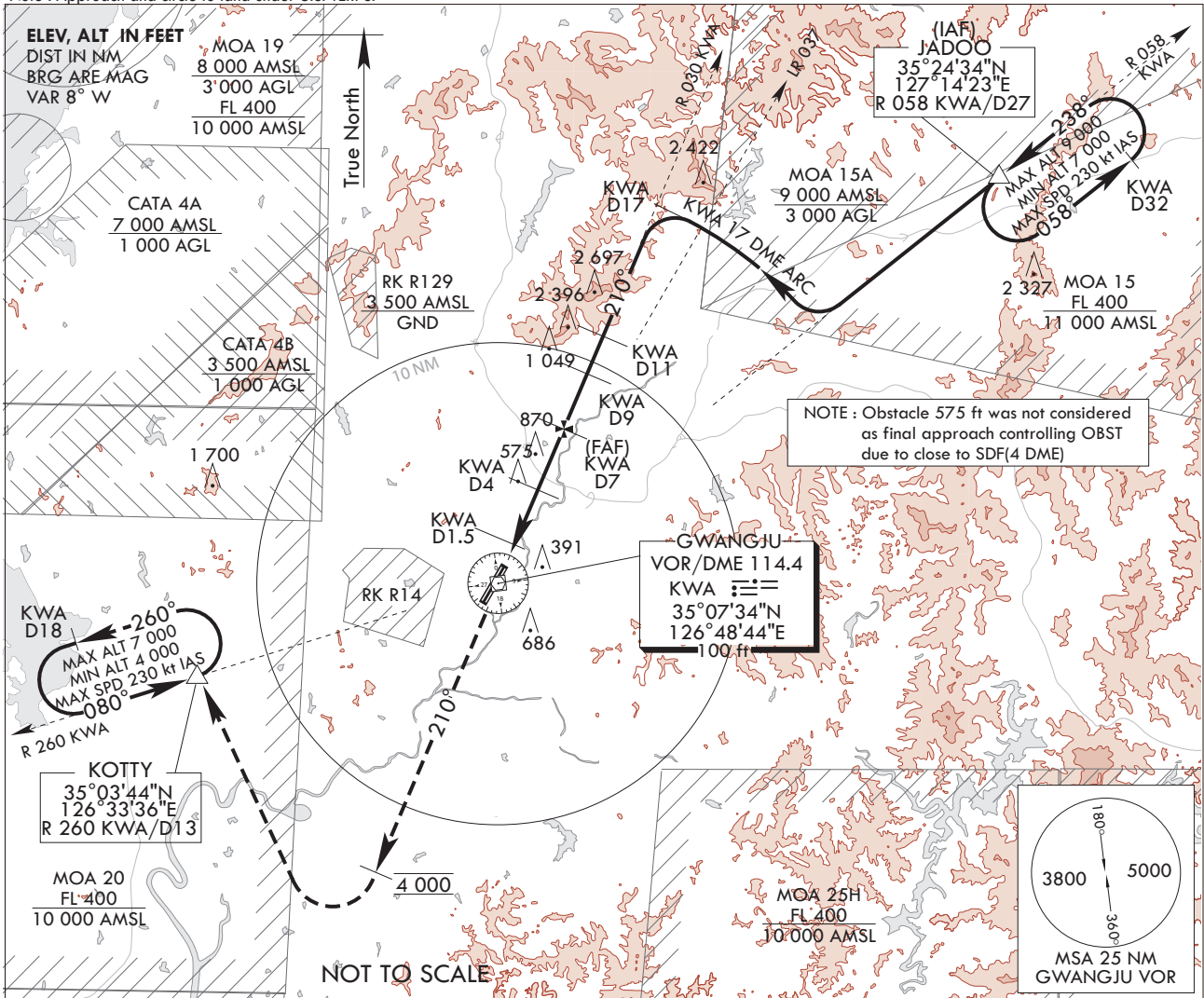
INSTRUMENT APPROACH CHART

AERODROME ELEV 48 ft
HEIGHTS RELATE TO
THR RWY 22R - ELEV 48 ft
HIGHEST ELEV TDZ 48 ft

GWANGJU APP 130.0
GWANGJU TWR 118.05
228.9
254.6

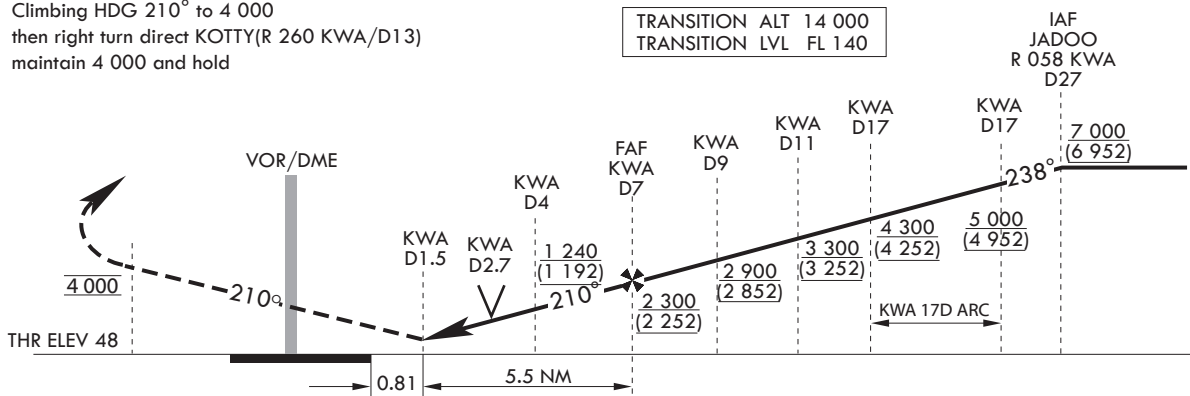
GWANGJU/Gwangju(RKJJ)
VOR/DME
RWY 22R

Note : Approach and circle to land under U.S. TERPS.



MISSED APPROACH

Climbing HDG 210° to 4 000
then right turn direct KOTTY(R 260 KWA/D13)
maintain 4 000 and hold



CATEGORY	A	B	C	D
S-VOR/DME 22R	740/1 220 m 692(700-1 200 m)		740-2 800 m 692(700-2 800 m)	740-3 200 m 692(700-3 200 m)
S-VOR/DME 22R (ALS INOP)	740/1 520 m 692(700-1 600 m)		740-3 200 m 692(700-3 200 m)	740-3 600 m 692(700-3 600 m)
*CIRCLING	780-1 600 m 732(800-1 600 m)	900-2 000 m 852(900-2 000 m)	940-4 400 m 892(900-4 400 m)	1 080-4 800 m 1 032(1 100-4 800 m)

Change : Amended coordinate and radial format.

INTENTIONALLY

LEFT

BLANK